

**Models:**  
 Pockit® Light 3W . . . . . P/N: L-POC-3LEDSFR  
 Pockit® Light 5W . . . . . P/N: L-POC-5LEDSCL  
 12VDC Class 2 Power Supply Sold Separately

**Accessories:**  
 Extension Cord D . . . . . P/N: L-LED-LINKD

# Installation Instructions

## Power Pockit® LED Lights - 12VDC

### 3W and 5W Dimmable

#### READ ALL INSTRUCTIONS BEFORE INSTALLING SYSTEM.

Before beginning installation, be sure power is turned OFF to light system.

*Note: 18W DC Power Supply can supply power to a maximum of (6) 3W Pockits® or (3) 5W Pockits®. 60W DC Power Supply can supply power to a maximum of (20) 3W Pockits® or (12 ) 5W Pockits®.*

- **FIRST**, roughly lay out lighting system before installation to help verify final positioning of all components and cord lengths.

*Note: Maximum length of cord from Power Supply to light should be 5m (16'). Longer cords could result in poor light quality.*

- Install Class 2 12VDC Power Supply concealed from view. *Keep power off to power supply until complete system is installed.*

Next, select either surface mount or recess mount options.

#### Steps to surface mount:

*Note: First determine whether Pockit® wires will ...*

- pass through a 5mm (3/16") hole in mounting surface (shelf, etc.) or*
- pass through knockout in Mounting Ring and run along surface. Select best method.*

- Determine final location of light(s). Mark exact position of light fixture on surface using Mounting Ring as a template. Mark for (2) screw holes.  
*Note: If you decide to route wires through hole in surface, mark placement of 5mm (3/16") hole inside the perimeter of Mounting Ring, so wires will be hidden when Ring is mounted.*
- Drill 1.5mm (1/16") pilot holes for the mounting screws (provided). If needed, drill 5mm (3/16") in mounting surface for wire hole. Be sure to remove rough areas at edge and inside hole.
- Pass the light fixture wires through Mounting Ring. Then properly route wire either through hole in mounting surface or Mounting Ring knockout (see #1). Attach Mounting Ring to surface with (2) screws.
- Push Pockit® Light Body into Mounting Ring allowing metal spring tabs on Light Body to hold in final position (see #2). See **Final Steps** below.

#### Steps to recess mount:

- Determine final location of light(s).
- Drill 57mm (2-1/4") hole to recess mount Pockit® Light Body.† Be sure to remove rough areas at edge and inside hole (see #3).
- Feed wires through hole and push Pockit® into place, allowing metal spring tabs on Light Body to hold in position. See **Final Steps**.

#### Final Steps:

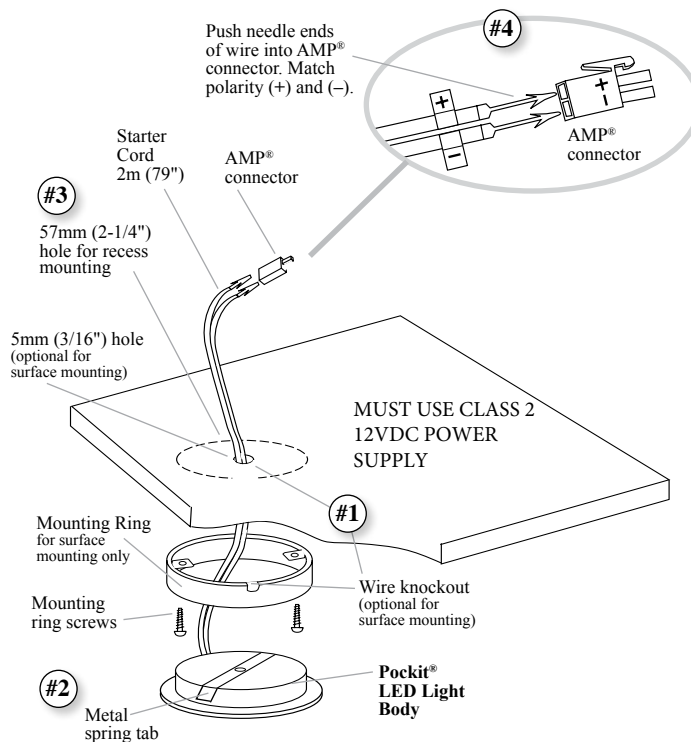
- Complete wiring installation to Power Supply. Push needle ends of Pockit® wires into AMP® connector until they are completely seated.  
**IMPORTANT:** Make sure you match polarity (+) and (-) of the wires to the AMP® connector. See markings on wires and connector (see #4).
- Finish wiring to power supply. Turn power on to power supply.

**Included:** Starter Cord 2m (79"), AMP® Connector and Surface Mounting Ring are included with each Light.

**Accessories:** 12V Extension Cord D (P/N: L-LED-LINKD) is used when light fixtures are installed farther apart from the Power Supply than the standard Starter Cord length will allow. They are available in 15cm (6"), 25cm (10"), 60cm (24"), 120cm (48"), or 180cm (72") lengths.

TRESCO® offers other accessories including: Switches and Dimmers.

**Save these instructions for future reference.**  
**For technical assistance: 1-800-227-1171**



#### IMPORTANT SAFETY INSTRUCTIONS

CAUTION: To reduce the risk of fire, electric shock, or injury to persons:

- Maximum 60W Class 2 12VDC Power Supply powers up to (20) 3W or (12) 5W Power Pockit Lights.
- LED are not replaceable.
- LED lights are bright. Do not look directly at lights.
- Not intended to be used in damp locations or outdoor areas.
- Not intended for recessed installation in ceilings or soffits.
- Do not conceal 120V Power Supply Cord or power supply inside a wall, ceiling, soffit, or similar permanent structure, unless consulting a licensed electrician.
- Use only insulated staples or plastic ties to secure ALL loose cords.
- Route and secure cords so that they will not be pinched or damaged when the cabinet is pushed to the wall.
- A licensed electrician should be consulted for wiring through ceilings, soffits, or walls. All wiring must follow NEC regulations.

This light is intended to be used as a cabinet light on wood, particle board or other structurally sound, heat resistant surface. Care should be taken during and after installation to avoid contact of light with wiring, cord, or any combustible material.



2409 Plantside Dr. Jeffersontown, KY 40299

Tel: 800-227-1171  
 Fax: 502-491-2215



PowPoc In/814/grx

Email: [cservice@trescolighting.com](mailto:cservice@trescolighting.com)  
 Web: [www.trescolighting.com](http://www.trescolighting.com)  
 I-PWRPOC-1014